

WHAT YOU WILL NEED

Janome Sewing Machine [used CM8P for project]
Janome Lap Seam Foot (PN 202463007) 9mm models only
Janome Zig Zag Foot **A**
Janome Purple Tip Needles #14
Fabric scissors | Pins | Quilting Clips
Chalk Pencil or Fabric Marking Pen
Cutting Mat | Quilting Ruler 6½" x 24" | Rotary Cutter
Small ironing board and Iron



FABRIC & NOTIONS (materials to make 1)

Fabric 1 Feature centre square front & back

- 50cm x width of fabric 107cm (20" x 42")

Fabric 2 Solid colour or Tone on tone pattern

- 150cm x width of fabric 107cm (59" x 42")

Iron-on Pellon: require 102cm x 15cm | 40" x 6"

Thread for construction: 1 Reel (to match fabric #2)



CUTTING INSTRUCTIONS

Fabric 1

Cut 2 strips 11¼" x 11¼" | 28½ cm x 28½ cm

Fabric 2

Sides for fabric 1

Cut 4 pieces 6¼" x 11¼" | 16 cm x 28½ cm

Bottom Border

Cut 2 strips 21¼" x 6¼" | 64cm x 16 cm

Top Border

Cut 2 strips 21¼" x 4¼" | 64cm x 11 cm

Top Facing for Border

Cut 4 strips 21¼" x 4¼" | 64cm x 11 cm

Handles

Cut 2 strips 5" x 21½" | 13 cm x 64 cm

Iron-on Pellon

Cut 2 strips 20" x 3" | 51 cm x 7½ cm

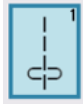
INSTRUCTIONS

Step 1

Thread machine with same thread top and bobbin.

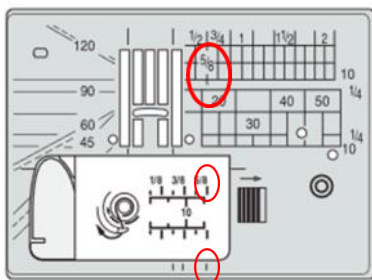
Attach Lap-Seam Foot

Select Straight Stitch #1



Step 2 - Making front of bag

Take one Heart fabric piece 11¼" x 11¼" | 28½cm x 28½cm and one Tone on Tone fabric 6¼" x 11¼" | 16cm x 28½cm. Place wrong sides together and down the long edge, stitch a seam ⅝" from the edge of the fabric, using the ⅝" mark on needle plate as a guide.



Repeat on the other side of the heart fabric.



Open up the seams and carefully cut away the left seam allowance only (heart fabric) to ¼" | 6mm or less.



Step 3

Repeat, Step 2 to make the back section of the Bag.

Step 4 - Lap-seaming

Fold the right seam allowance (one that was not trimmed) to the seam line to cover the left seam allowance.



Finger press down about 1½" | 4cm

Fold the seam allowance to the left, place under the foot, sew several stitches slowly, aligning the seam line with the guideline on the foot, then stop with the needle in the down position.



Raise the foot, using the Foot up/down button and insert the folded portion of the fabric into the slit of the foot. Lower the foot while pulling the folded portion of the fabric slightly to the left.



Step 4 cont.

Start stitching and guide the fabric fold into the foot. Once the stitching is underway, the curl of the foot will continue to fold the seam allowance and stitch it down in place.



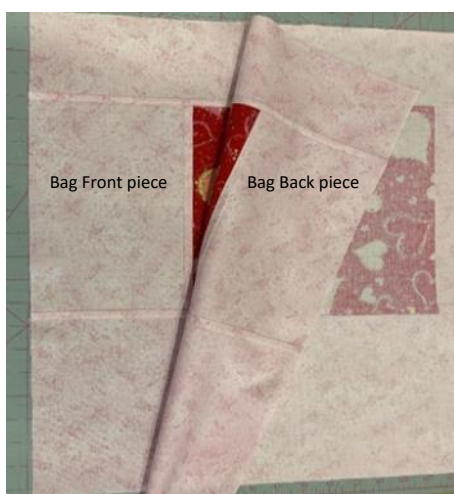
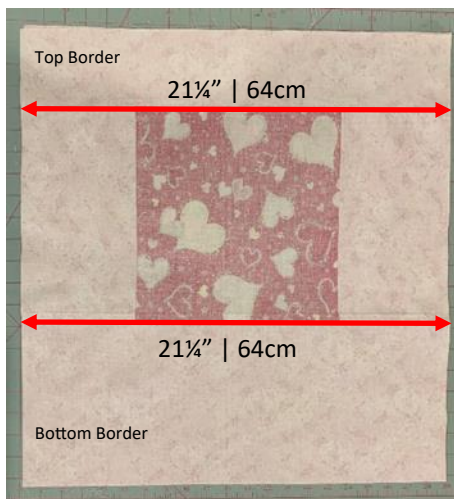
Repeat Step 4 for the centre piece on the bag back.

Step 5

Press the seams, then neaten the edges if needed. Top and bottom edges should measure 21 1/4" | 64cm.

Step 6

Repeat Steps 4 & 5 to seam the top border and bottom border of the bag, to both front and back pieces.



Step 7 - Handles

Select the strip 5" x 22" | 13cm x 56cm and fold along the length with wrong sides together.

Press to form a crease, then open the strip so that you can see the crease line. Then fold the raw edges in, on both sides towards the centre crease and press.



Fold handle in half with folded edges matching up, all raw edges should be enclosed in the handle.

Repeat process for the second handle fabric strip.



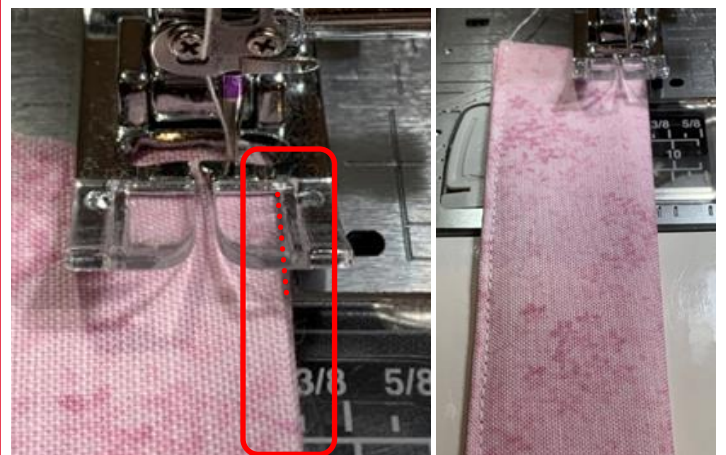
Attach the **Zig Zag Foot 'A'**

Stitch length: 3mm

Stitch Width: 7mm

Stitch handle closed by topstitching 1/8" | 3mm from the fabric edge using the line marked on the inside right-side edge of the foot as a guide, then topstitch on the other side of the handle.

Repeat for the other handle.

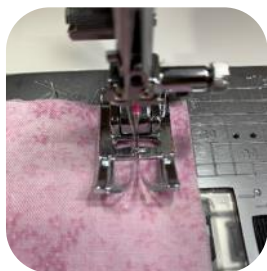


Step 8 - Construction

Change Stitch Width to 4.5mm (CNP)

With wrong sides together and making sure that the lapped seams are matching.

Using the $\frac{1}{2}$ " mark (approx. 12mm) on the needle plate as your guide, stitch bag front to bag back.



Trim back the seam allowance by $\frac{1}{8}$ " | 3mm



Press the seam allowance flat and to one side.



Fold the fabric with right sides together, then press at the seam line.

Stitch again using a $\frac{1}{2}$ " | 12mm seam allowance, this will encase the raw edges. Press the seam to one side. With wrong sides together and using the $\frac{1}{2}$ " mark on the needle plate as your guide, stitch across the bottom of the bag.

Then repeat the process on the opposite side seam.

For the bag to have a flat bottom, fold the bottom corner of the bag to create a triangle in the corner, matching up the side seams and the bottom seam.



Pin the corner and use a marking pen or chalk to mark $1\frac{1}{2}$ " | 12mm away from the corner and draw a line.

Stitch across the line.

Repeat for the opposite corner.

Step 9 - Attaching the handles

Draw a mark 4" | 10cm in from each side seam on the right side of the fabric. Pin or clip so that the outside of the handles are on the 4" | 10cm mark.

Note: Be careful not to twist the handles.

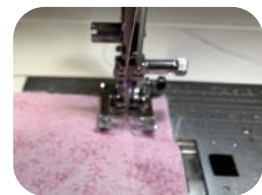
Stitch the handles in place, approx. $\frac{1}{4}$ " | 6mm from the top edge of the bag.

Step 10 - Facing

Press the iron-on Pellon to the wrong side of the facing pieces $21\frac{1}{4}$ " x $4\frac{1}{4}$ " | 64cm x 11cm.



With wrong sides together stitch down the short ends of the facing with a $\frac{1}{2}$ " | 12mm seam allowance.



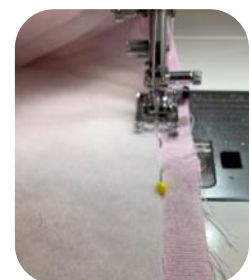
Trim the seam back by half.

With the facing right side together, place the seam edge under the foot with the right side of the foot lining up with the fabric edge.



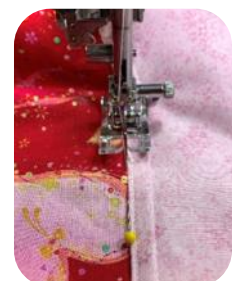
Place right side of facing, on top right side of the bag, lining up side seams, with handles sandwiched in-between use clips or pins to hold together and face the seams in opposite directions.

Stitch the facing to the bag using a $\frac{1}{2}$ " | 12mm seam allowance, or use edge of iron-on Pellon as a guide.



Fold facing to the wrong side. Press the edge of the bag.

Turn a $\frac{1}{2}$ " | 12mm on bottom edge of the facing. Pin facing down and stitch in the ditch along lap-seam to hold.



Next, stitch in the ditch down both side seams to hold the facing down.

Press the bag.



FINISH