

Embroidery: In the Hoop Embroidery Project – Coaster

Requirements:

Janome Embroidery Machine
 Hoop to fit design (130mm x 130mm)
 Janome Purple Tip Needles #14
 Embroidery foot (P)
 Tearaway stabilizer
 Pressing cloth

Qty	Size	Details/Colour/Fabric
1	6 x 6"	Wadding
1	4 ½ x 4 ½"	Main background fabric
2	1 ½ x 6"	Long Borders (Pink)
2	1 ½ x 4"	Short Borders (Black print)
1	6 x 6"	Backing fabric
6		Janome Embroidery Threads: 001 white, 211 pale pink, 225 red, 241 dark pink, 246 green, 258 brown
1		Bobbin Fill



Construction:

1. Load design onto your machine.
2. Hoop tear away to fit selected hoop and thread machine with background colour.

3. Stitch out the wadding placement stitch.



4. Centre wadding over the placement stitch line. Machine will stitch a tacking stitch to hold the wadding in place.



5. Take the background fabric line up with the previously sewn lines, then sew the next tacking stitch to hold the fabric into position on the centre of the coaster.



6. Sew out the background design. (Sample stitched with white thread on white fabric)



7. Change thread colour to brown to stitch the branch.



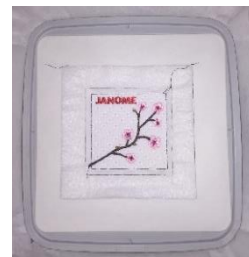
8. Change thread colour to red to stitch the Janome emblem.



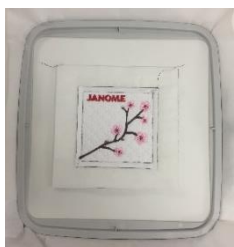
9. Change thread colour to pale pink to stitch the cherry blossoms.



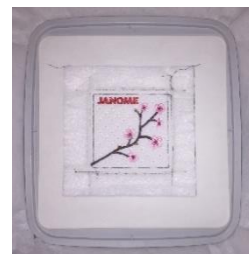
10. Change thread colour to dark pink to stitch the centres of the cherry blossoms.



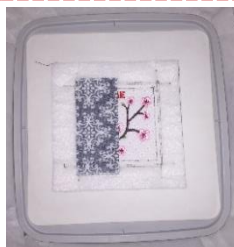
11. Change thread colour to green to stitch the flower buds.



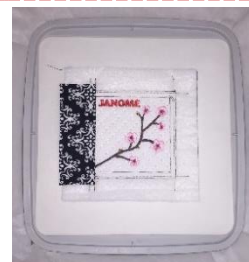
12. The centre of the coaster will now be finished. The next steps will allow you to add the border fabrics while the coaster is still in the hoop.
- Sew out placement lines for border fabric.



13. Place (1) - 1 1/2" x 4" fabric strip right sides together on top of centre coaster lignin up with the placement line on the left edge of the coaster.

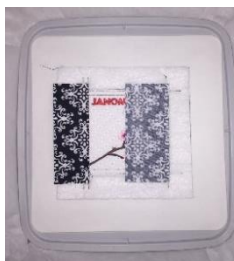


14. Press open so that the border fabric is laying open onto the wadding with right side facing up.



Sew seam line.

15. Place (1) - 1 1/2" x 4" fabric strip right sides together on top of centre coaster lignin up with the placement line on the right edge of the coaster.



16. Press open so that the border fabric is laying open onto the wadding with right side facing up.



Sew seam line.

17. Place (1) - 1 1/2" x 6" fabric strip right sides together on top of centre coaster lignin up with the placement line on the top edge of the coaster.



18. Press open so that the border fabric is laying open onto the wadding with right side facing up.



Sew the seam line.

19. Place (1) - 1 ½" x 6" fabric strip right sides together on top of centre coaster lignin up with the placement line on the bottom edge of the coaster.



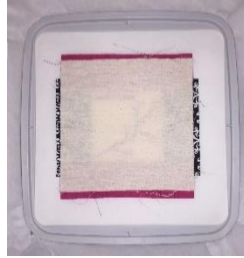
Sew the seam line.

20. Press open so that the border fabric is laying open onto the wadding with right side facing up.

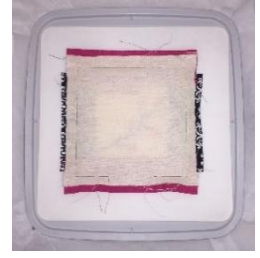


All four sides of the coaster should now have strips of fabric attached and pressed open.

21. Place backing fabric right side down on top of the already embroidered coaster design.



22. The machine will now sew the backing on. It will start about 1 ½" from the bottom left corner and sew clockwise around all four sides leaving approximately a 2" opening.



23. Remove the tearaway with the coaster attached from the hoop. Gently tear the coaster away from the stabilizer. Remove any excess tearaway.

24. Trim excesses fabric and wadding from the coaster leaving ¼" seam around all four edges.

25. Trim corners, making sure not to cut the stitching.

26. Turn the coaster right side out and press. Take care with the embroidery when pressing.

27. Slip stitch the opening closed on the bottom edge of the coaster.

