

Protective Fabric Face Mask

Created by: Liz Thompson



This easy to follow step by step tutorial will guide you through the process of making a personal fabric mask. Some organizations are collecting fabric face masks, inquire where you can help to make a difference.

Please Remember: Only medically approved masks can protect against the Covid-19 virus. These fabric masks serve as a reminder not to touch our faces and to wash our hands frequently.

STAY CALM AND SEW ON...

Materials Required:

- 4 Pieces of fabric approx 6 x 6 inches.
- 2 Pieces of elastic (1/4 inch wide or narrower) 9 Inches long each (19 inches total)
- Optional: insert using vacuum cleaner bag "fabric" or similar.

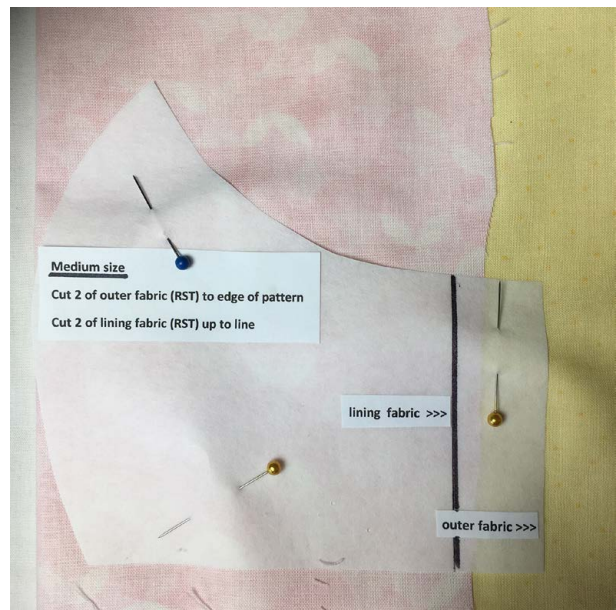
Note: Tightly woven fabrics that will not become moist too quickly and can be washed frequently are a good choice.

Pattern: See last page.

Finished Size: Approximately 8.5 x 4.5 inches

Skill Level: Confident Beginner

Time: About 30 minutes



1. Cut 2 pieces of outer fabric to the right edge of the pattern as shown in image above. This is about 1 inch longer than the lining fabric. Cut 2 layers at once by laying the fabric right sides together. This is yellow fabric in the image.

Cut 2 pieces of lining fabric just up to the black line on the right. This is pink fabric in the image.



2. Pin outer pieces right sides together and do the same for the lining pieces.



4. Press seams to one side – Lining and outer fabric seams pressed in opposite directions. Also press the lining side edges (pink fabric) in about $\frac{1}{4}$ - $\frac{1}{2}$ inch



3. Sew a $\frac{1}{4}$ - $\frac{1}{2}$ inch seam along the center curved seam as indicated in above image. Then clip both seams to about $\frac{1}{2}$ inch from each end.



5. Top stitch the seam flat on both outer fabric and lining for a professional finish.



6. Pin outer fabric and lining right sides together along top and bottom edges.



Fold over the longer outer fabric at sides twice to form a casing for the elastic. Sew in place.

8. Fold over the longer outer fabric at sides twice to form a casing for the elastic. Sew in place.



Clip seams and turn out to right side.
Top stitch top and bottom edge if desired.

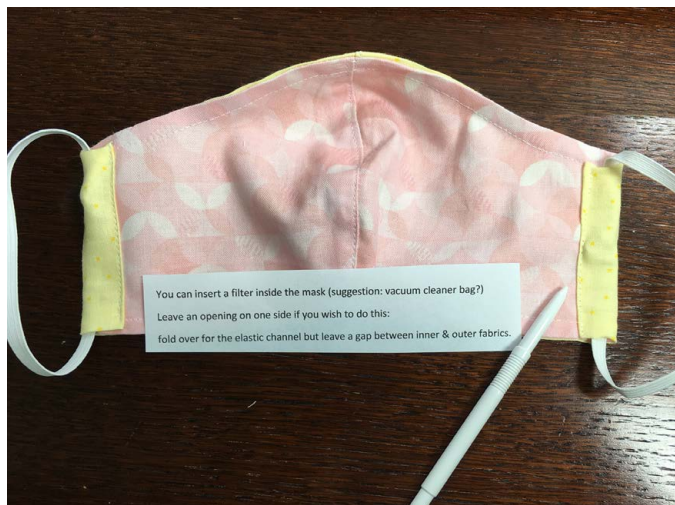
7. Clip seams and turn out to right side. Top stitch top and bottom edge if desired.



Feed elastic through casing with a bodkin
Adjust for sizing around the ears and zig-zag elastic ends
Move elastic join into the casing.

9. Feed elastic through casing with a bodkin. Adjust for sizing around the ears and zig-zag elastic ends together.

Move elastic join into the casing.



10. You can insert a filter inside the mask (suggestion: vacuum cleaner bag)

Leave an opening on one side if you wish to do this:
fold over for the elastic channel but leave a gap between inner and outer fabrics.



From all of us here at Janome, stay safe.

TEMPLATE One size does not fit all.

For women print to size. For Children a little smaller. Print a little larger for men.

