

MULTI TECHNIQUE EUROPEAN CUSHION

Accessory of the Month November 2018

Large Buttonhole Foot



[Print Flower Template](#)

[SVG Flower Template](#)

MULTI TECHNIQUE EUROPEAN CUSHION

Accessory of the Month November 2018

Large Buttonhole Foot

Requirements

- Janome Sewing Machine
- Large Buttonhole foot
- (8) - 5.5" x 5.5" squares for the flower backgrounds
- (32) - 6.75" x 1.75" strips for the frame
- (8) - 5.5" x 5.5" for the flowers
- (2) - 8" x 8" for the centre squares
- (1) - 4" x 42" strip for the bow
- (4) - 3" x 25" strips for the flange
- 75cm of fabric for the backing
- Construction thread
- Embroidery thread for applique and buttonholes
- (5) - 1" - 2" Buttons for the closure
- 1/4" sewing foot
- Applique foot
- Button Sewing on Foot
- Ditch foot
- Vliesofix for applique
- Ruler, rotary cutter, mat
- Scissors and snips
- Tape measure
- Pins
- Marking Pen
- Printed template for flower or SVG (download on previous page)
- Seam Ripper or buttonhole tool
- Point turner

Instructions:

1. Prepare the vliesofix by tracing the flower design if cutting traditionally. NOTE: If using the cutter to cut flowers download the SVG file.
2. Press the vliesofix to the flower fabric.
3. Cut out the flowers for the applique.
4. Press the flowers onto the background fabrics. You can decide if you wish them to be randomly placed or structured in the same position and direction.
5. Attach the applique foot to the machine and applique the flowers to the background with tearaway on the back to support the stitches. | Figure A
6. After the applique stitching is complete remove the stabilizer and press the blocks.
7. Attach the 1/4" foot to the machine and set the machine for a 1/4" stitch.
8. Sew (4) frame strips around each block. We used a technique where the first strip is sewn half way down the block then stop and press the sewn end before adding the next side. | Figure B.
9. Continue to add each side until the four have been completed then complete the seam of the first side so that the block is then complete. | Figure C

Note: In the sample we completed half the blocks with green frames and half with blue.



Figure A



Figure B



Figure C

MULTI TECHNIQUE EUROPEAN CUSHION

Accessory of the Month November 2018

Large Buttonhole Foot

Instructions:

9. Press the 8 flower blocks and set aside.
10. Attach the large buttonhole foot to the machine with the button section extended to it's fullest.
11. Take the centre square fabric for the cushion and mark the positions for the buttonholes with the following markings:
 - 1" in from the raw each on both parallel sides and 3" in from the opposite horizontal sides. | Figure D
12. Position one of the 3" markings under the foot lining up the red horizontal marks and the 1" line with the centre red vertical marking on the foot.
13. Pull down the buttonhole lever on the machine and select the standard buttonhole.
14. Sew out the entire button hole then move to the opposite side and sew the second buttonhole with the same positioning. | Figure E
15. Open the buttonhole using your preferred method. | Figure F
16. Take the second 8" square block and lay behind the block with buttonholes. This is the background for the tie section so that the pillow isn't visible when the cushion is complete.
17. Lay the 8 flower blocks out with the centre buttonhole block in place.
18. Attach the $\frac{1}{4}$ " foot to the machine again and seam together the 3 blocks in each row. Press the seams then sew the 3 rows together to form the main cushion section. | Figure G
19. Press the completed centre.
20. Using the same method as the small frame strips attach the flange to the cushion centre. | Figure H
21. Take the strip for the bow and press the length in half matching the long sides with right sides together
22. Trim a 45degree angle off both ends ensuring the angle is in the same direction and the point is on the folded side.
23. Using a $\frac{1}{4}$ " seam sew the open edges ensuring that you leave an opening to turn the tube through. | Figure I

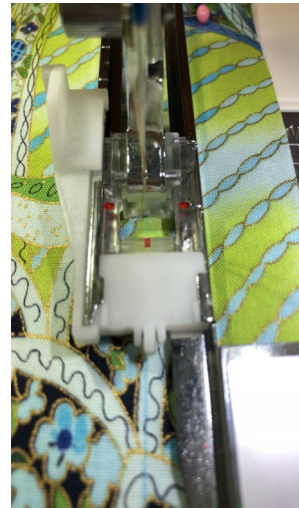


Figure D



Figure E



Figure F



Figure G



Figure H

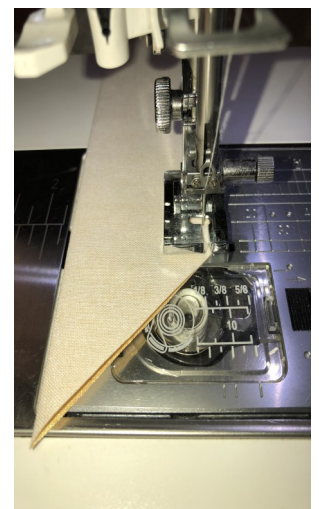


Figure I

MULTI TECHNIQUE EUROPEAN CUSHION

Accessory of the Month November 2018

Large Buttonhole Foot

Instructions:

24. Trim the points off the bow and turn through ensuring the angles and points are pushed through. | Figure J
25. Press the bow strip flat and set aside.
26. Take the backing pieces and cut 14" x 27.5". Fold the 27.5" side down 2". Then fold again 2" so that the raw edge is inside the fold. Press.
27. Take the second piece fold the 27.5" side down 3". Then fold again 3" so that the raw edge is inside the fold. Press
28. Topstitch this edge on both pieces. | Figure K
29. On the longer pieces mark out the buttonholes for stitching. Find the centre, this will be the middle buttonhole and then mark 5" markings either side for the additional 4 buttonholes.
30. On the smaller piece mark out the positions for the buttons to be stitched at the same positions as the buttonholes.
31. Attach the large buttonhole foot and place one of the buttons in the back of the foot.
32. Sew the buttonholes. | Figure L
33. Attach the button sewing foot.
34. Sew the buttons onto the marked positions. | Figure M
35. Lay the front of the cushion on a flat surface facing up.
36. Take the backing piece that was just created and do the buttons up into the buttonholes.
37. Lay the backing piece right side down on top of the front of the cushion.
38. Attach 1/4" seam foot to the sewing machine and select the 1/4" seaming stitch.
39. Sew around the edge with a 1/4" seam. | Figure N
40. Turn the cushion right side out and press all seams.
41. Topstitch the flange down by sewing in the ditch between the flange and the blocks.
42. Your cushion is now ready for the cushion insert to be added.

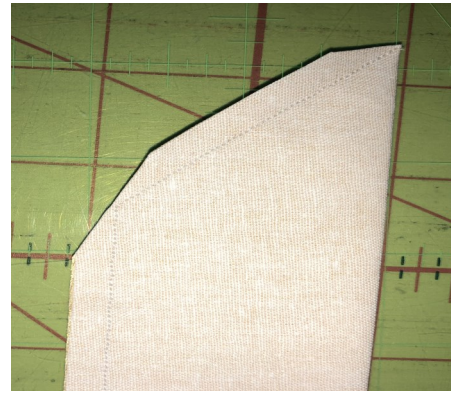


Figure J



Figure K



Figure L

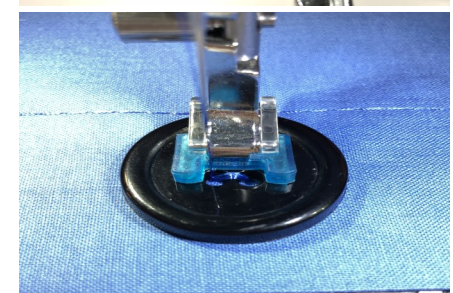


Figure M

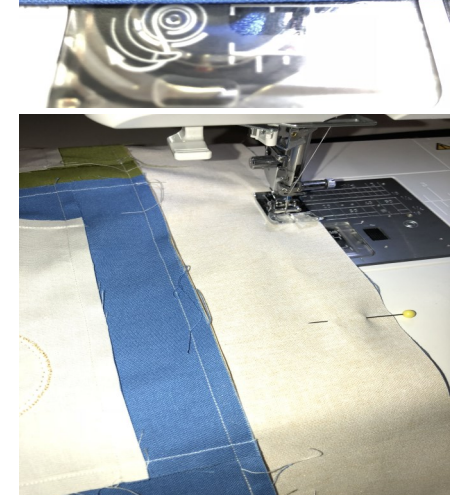


Figure N