

THREE TIER FLUTED EDGE BRIDAL VEIL

Accessory of the Month September 2018

Cording Foot A for the Overlocker



THREE TIER FLUTED EDGE BRIDAL VEIL

Accessory of the Month September 2018

Cording Foot A for the Overlocker

Requirements

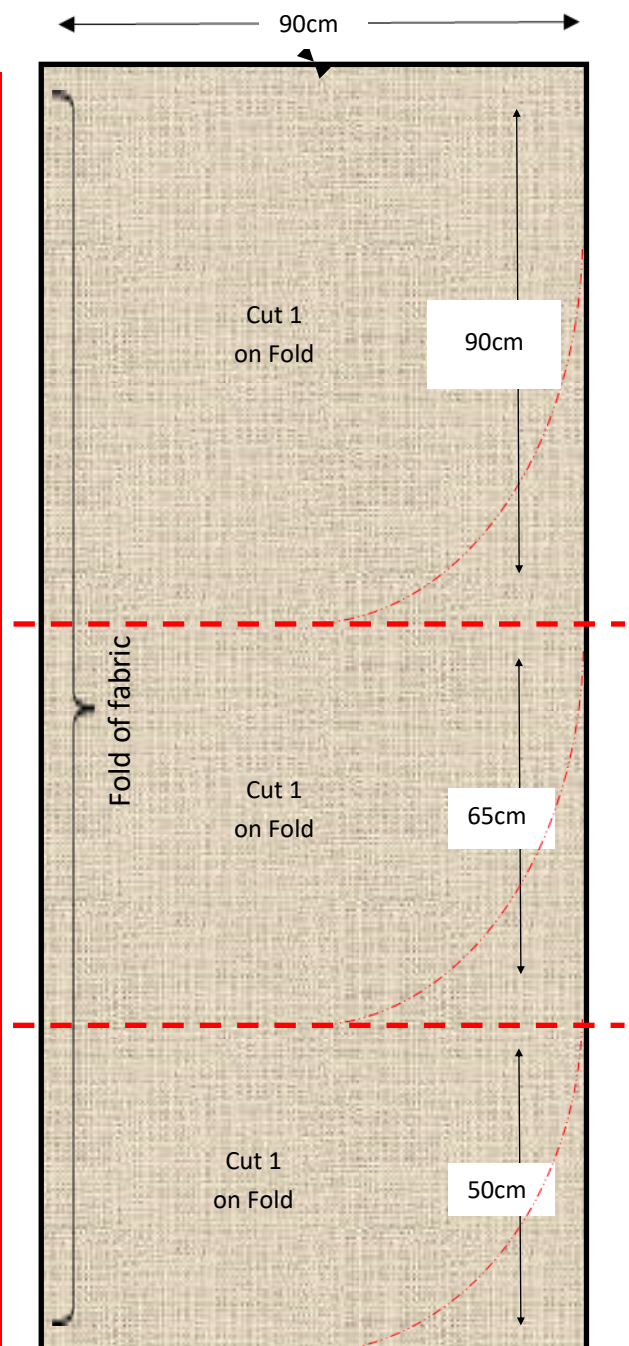
- Janome ML644D Overlocker or Similar
- Cording foot A
- Bridal Tulle 1.80m x 270cm wide (or amount to suit the length if you are changing the length)
- 3 spools of overlocking thread
- 1 spool of woolly nylon thread
- Hair Comb
- Heavy cotton thread (4ply used)
- Reel of clear Fishing Line (25lb/11.3kg weight)
- Pins
- Hand sewing needle to be able to thread the heavy cotton thread

Cutting Instructions:

1. Fold the length of the tulle in half to create a long rectangle that is 90cm wide with one long side folded.
2. Measure down the length marking the three sections:
 - 1st section 90cm from the straight edge
 - 2nd section 65cm from the first cut line
 - 3rd section 50cm from the second cut line
3. Cut the three section apart.
4. Then on each piece cut out the corners in a curve shape as shown on the diagrams with a red dotted curved line.

Note:

For more specific measurements use a tape measure and measure from where you would like each veil tier to sit on your head to the final resting point on your body, then add one inch to all 3 pieces, then calculate how much fabric you need.



THREE TIER FLUTED EDGE BRIDAL VEIL

Accessory of the Month September 2018

Cording Foot A for the Overlocker

Sewing Instructions:

Setting up the machine:

5. Remove the standard foot from the sewing machine.
6. Insert some cord into the guide on the cording foot (A). Then, attach the foot to the machine and pull a little cord behind the foot. Figure A
7. Remove the left needle and change the settings to Rolled Hemming. (See your instruction book for exact settings.) | Figure
Needles: Right only
Stitch Length: R
Differential Feed: **1**
8. Thread the machine with overlocker thread in the Right needle and Lower looper and woolly nylon thread in the upper looper.

Notes:

- For extra body and more fluted edge, overlocking the edge will work better when stitching over fishing line. The thickness/weight of the fishing line will depend on the effect required.
- To make overlocking over the fishing line easier and without cutting it while stitching, the Cording Foot A is recommended.
- The hole on the foot will guide the fishing line directly between the needle and the knife, centering it under the upper looper stitch and left of the knife.
- You must choose either the blanket stitch or the rolled hem stitch when sewing cord with the cording foot. Use 3 standard-width threads.



Cording Foot (A)

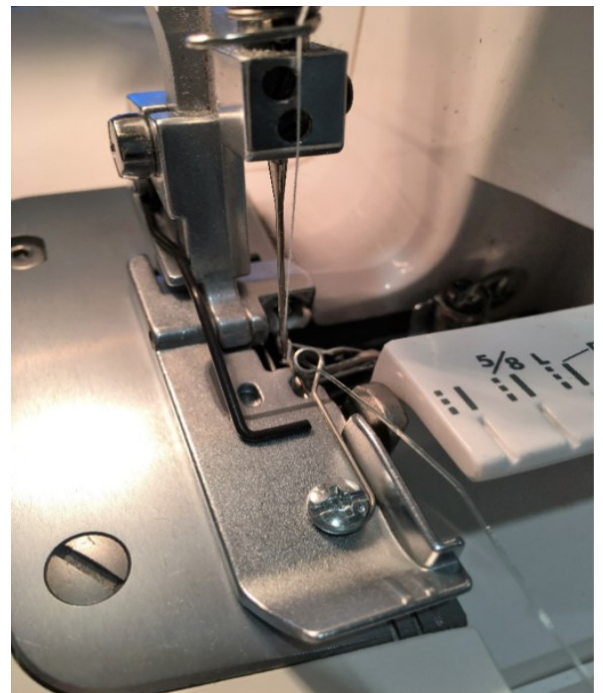


Figure A

THREE TIER FLUTED EDGE BRIDAL VEIL

Accessory of the Month September 2018

Cording Foot A for the Overlocker

9. Start stitching over the fishing line for about 10-15cm, then position the tulle underneath the cording foot and roll hem around the curved edge making sure that the fishing line unwinds freely from the reel. | Figure B
10. Carefully stretch the tulle to increase the fluting on the edge.
11. When you reach the end of the piece continue to overlock on the fishing line for about 10-15cm. | Figure C
12. Repeat the process on the other two pieces.
13. Set overlocker for standard 4 thread overlock stitch, as per Instruction manual, with overlocker thread on both needles and upper/lower looper.
14. Place all 3 layers together in size order (smallest to the largest tier) matching the top raw edges pin together.
15. To gather the edges together easier and quicker, thread the heavy cotton thread through the hole on the cording foot. | Figure D
16. Removing pins as you go overlock over the cord to the top edge of the three pieces | Figure E
17. Secure cord on one end and pull the cord on the other end to gather the tulle to fit the comb size.
18. Position the veil onto the comb and hand-stitch in place using the Heavy Cotton thread. | Figure F
19. Finish the top of the Veil with a trim/flower to cover and decorate the comb.



Figure F

Figure B

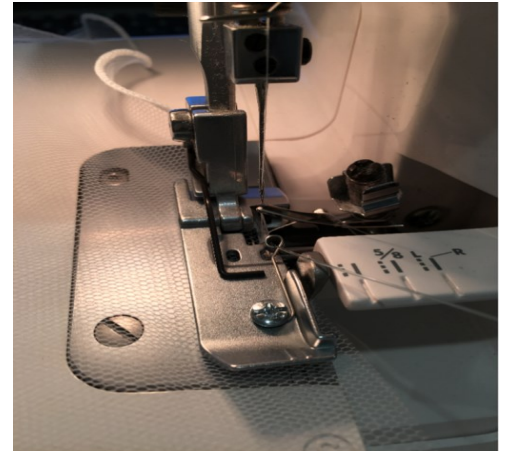


Figure C



Figure D



Figure E

