

HOOPED EMBROIDERY QUILTING

Accessory of the Month August 2018

Acufil Quilt Kit



HOOPED EMBROIDERY QUILTING

Accessory of the Month August 2018

Acufil Quilting Kit

Requirements

- Acufil Quilting Kit
- Janome Embroidery machine
- Quilt top
- Quilt backing
- Quilt wadding
- Quilting Safety Pins
- Quilting Thread
- Matching thread on bobbins
- Fabric marker
- Printer to print templates
- Magic sticky tape
- Paper Scissors
- Purple Tip Needles
- Contrast thread if you would prefer to baste the centre markings rather than using a fabric marker

Acufil Multiple Design Layout' to stipple entire quilt:

1. Open Acufil Tools program on the PC
2. Select the heading 'Acufil Multiple Design Layout'
3. 'Editing Size' window will open and you can select the width and height of the quilt. (Note: If you would like the quilting to stitch off the edge of the quilt be sure to add 5'' to the width and height of the exact quilt top measurements to allow for the repeats to cover the entire quilt top properly.)
4. Enter the dimension of the quilt and click OK. | Figure A
5. The software will then calculate the optimum size of the AcuFil stipple design pattern and number of repeat patterns to fill the quilt area. | Figure B
6. Select the next arrow and the preview of the stipple design will show. At this stage you can save the design to your USB stick and print the templates. | Figure C
7. To save the design select the 'Write to USB' tab so that the design can be used on the machine. (AcuFil designs are not editable once saved and opened on the machine.)

Printing the Template Sheet

1. Click Application circle in the top left of the screen. Select Print and print the template sheets and design layout. | Figure D
2. Cut the template sheet along the cutting line. (Note: with some designs you might also like to cut into the edge of the design so that you can see each repeat nesting into the last design.)
3. When the template is printed the dotted lines show the centre marking for each hooping and the solid line is the edge of the design.

Follow the Quilt Preparation and Stitching Instructions on page 6 to complete the sew out.

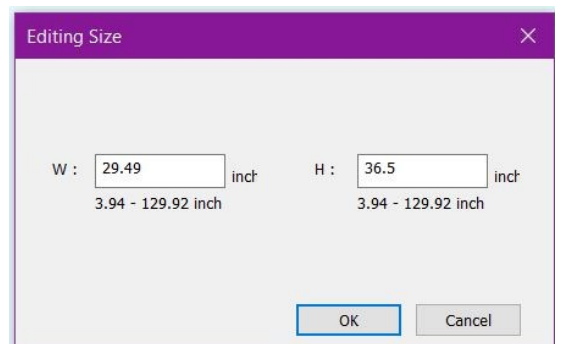


Figure A

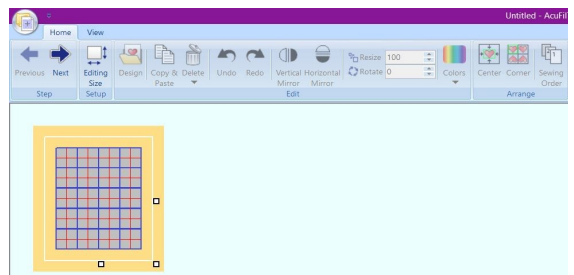


Figure B

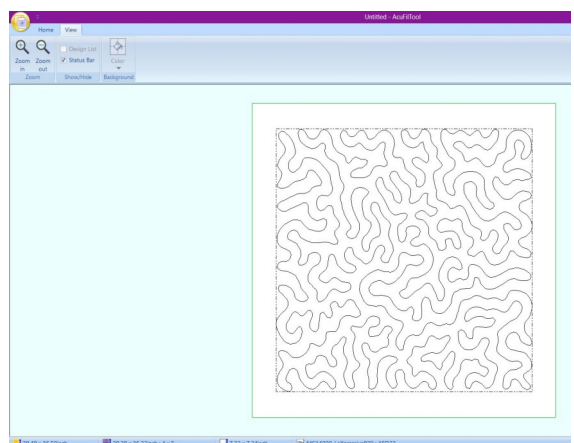


Figure C

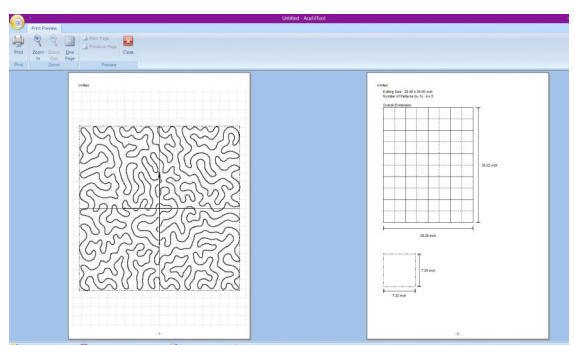


Figure D

HOOPED EMBROIDERY QUILTING

Accessory of the Month August 2018

AcuFil Quilting Kit

Create Original Acufil Design: (Use to create all over quilting)

1. Select the heading 'Create original Acufil Design'
2. 'Editing Size' window will open and you can select the width and height of the quilt. (Note: If you would like the quilting to stitch off the edge of the quilt be sure to add 5" to the width and height of the exact quilt top measurements to allow for the repeats to cover the entire quilt top properly.)
3. Enter the dimension of the quilt and click OK. | Figure E
4. The software will then calculate the optimum size of the AcuFil working area for the design and number of repeat patterns to fill the quilt area.
5. Select the next arrow and you will see a blank page to create your own design.
6. Select the 'Design' tab on the tool bar. A window will then open for you to access the 'Design Folder'. Select the folder 'Quilting Designs' (Note: Example shown is using design named 'Quiltingdesign23'. | Figure F)
7. Once the design is open you can then alter and create your own design. Select the design rotate 45 degrees using the rotation on the tool bar then moved the top right corner of the hoop. Then select the 'Corner' icon and the design will repeat into the other corners. | Figure G & H
8. Once you are happy with the design select the 'Next' arrow to view the template.
9. To save the design select the 'Write to USB' tab so that the design can be used on the machine. (AcuFil designs are not editable once saved and opened on the machine.)

Printing the Template Sheet

1. Click Application circle in the top left of the screen. Select Print and print the template sheets and design layout.
2. Cut the template sheet along the cutting line. (Note: with some designs you might also like to cut into the edge of the design so that you can see each repeat nesting into the last design.)
3. When the template is printed the dotted lines show the centre marking for each hooping and the solid line is the edge of the design.

Follow the Quilt Preparation and Stitching Instructions on page 6 to complete the sew out.

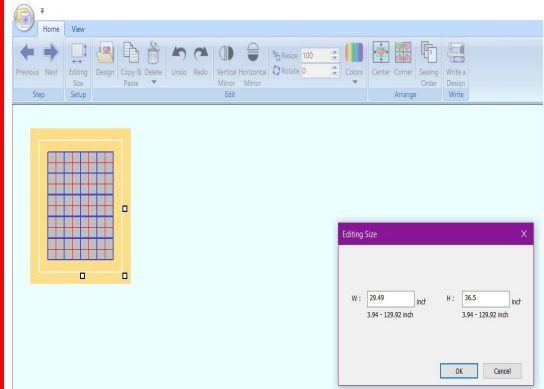


Figure E



Figure F

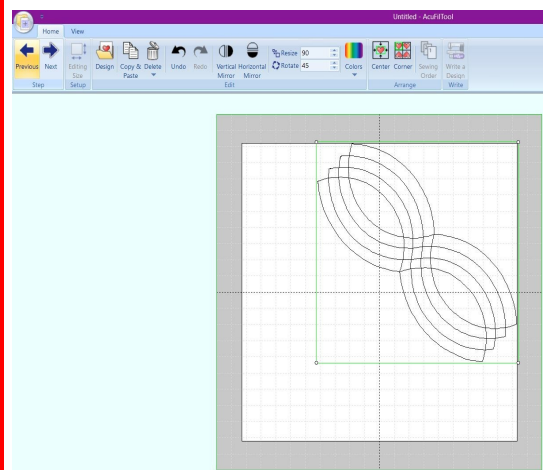


Figure G

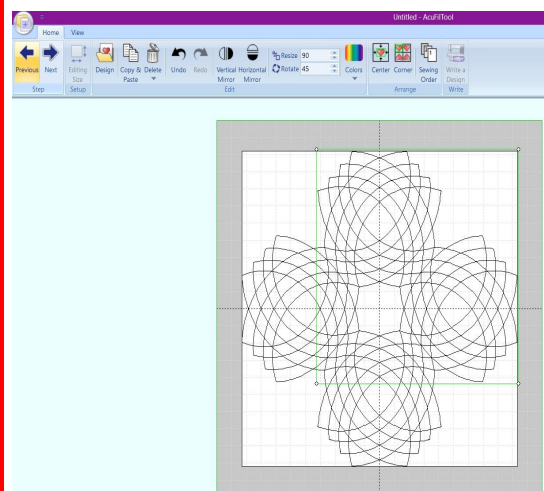


Figure H

HOOPED EMBROIDERY QUILTING

Accessory of the Month August 2018

Acufil Quilting Kit

Edit Design: (Use to create single block quilting)

1. Select the heading 'Edit Design'
2. 'Editing Size' window will open and you can select the width and height of the block.
3. Enter the dimension of the block and click OK.
4. Select the next arrow and you will see a blank square the size you selected to create your own design.
5. Select the 'Design' tab on the tool bar. A window will then open for you to access the 'Design Folder'. Select the folder 'Quilting Designs' (Note: Example shown is using design named 'Quiltingdesign07.')
6. Once the design is open you can then alter and create your own design.
7. Once you are happy with the design select the 'Next' arrow to view the template.
8. To save the design select the 'Write to USB' tab so that the design can be used on the machine. (AcuFil designs are not editable once saved and opened on the machine.)

Printing the Template Sheet

1. Click Application circle in the top left of the screen. Select Print and print the template sheets and design layout.
2. Cut the template sheet along the cutting line. (Note: with some designs you might also like to cut into the edge of the design so that you can see each repeat nesting into the last design.)
3. When the template is printed the dotted lines show the centre marking for each hooping and the solid line is the edge of the design.

Follow the Quilt Preparation and Stitching Instructions on page 6 to complete the sew out.

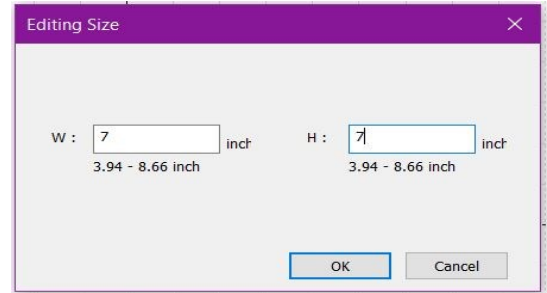


Figure I

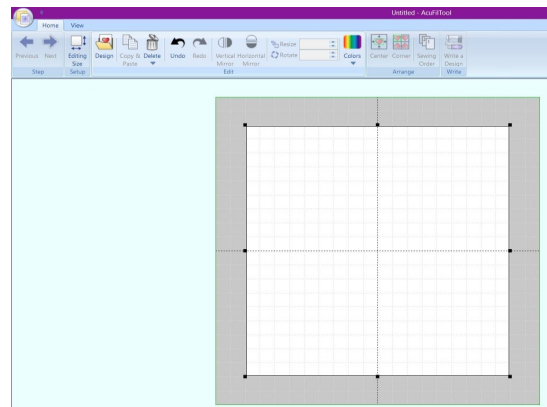


Figure J



Figure K

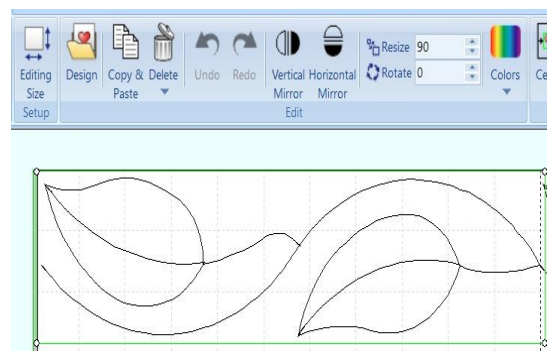


Figure L

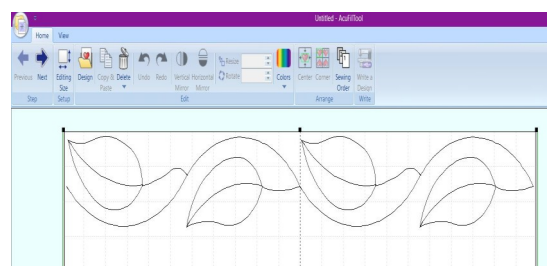


Figure M

HOOPED EMBROIDERY QUILTING

Accessory of the Month August 2018

Acufil Quilting Kit

Multiple Setting: (Use existing design to create layouts for borders, sashing etc)

1. Select the heading 'Multiple Setting'
2. The 'Open' window will then show allowing you to pick up a previous block design to create into areas like borders or sashing. Select the design and open. | Figure N
3. Enter the dimensions that you need the design to fit into. This must be between the range shown on the window as a guide. | Figure O
4. The software will then calculate the design and number of hoopings to fit. (Note: As the design may need to fit a particular area you may get a message that you can choose to accept or deny before advancing. | Figure P
5. Select next to save the design and print templates.
6. To save the design select the 'Write to USB' tab so that the design can be used on the machine. (AcuFil designs are not editable once saved and opened on the machine.)

Printing the Template Sheet

1. Click Application circle in the top left of the screen. Select Print and print the template sheets and design layout. | Figure Q
2. Cut the template sheet along the cutting line. (Note: with some designs you might also like to cut into the edge of the design so that you can see each repeat nesting into the last design.)
3. When the template is printed the dotted lines show the centre marking for each hooping and the solid line is the edge of the design. | Figure R

Follow the Quilt Preparation and Stitching Instructions on page 6 to complete the sew out.

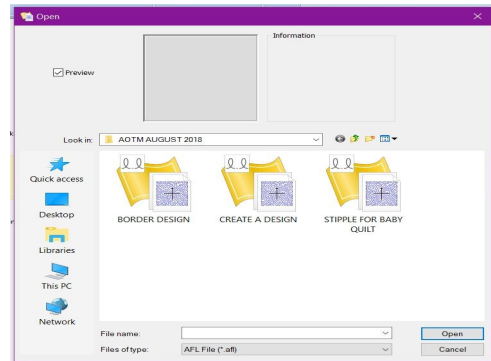


Figure N

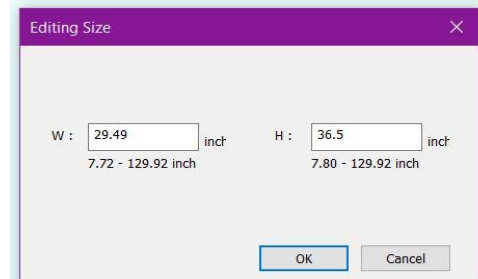


Figure O

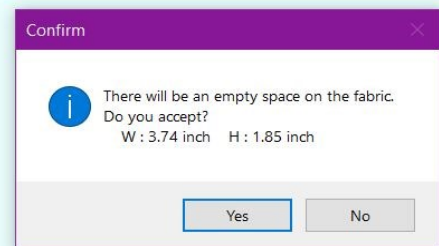


Figure P

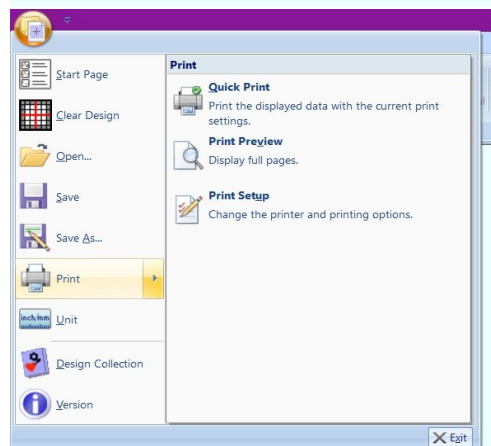


Figure Q

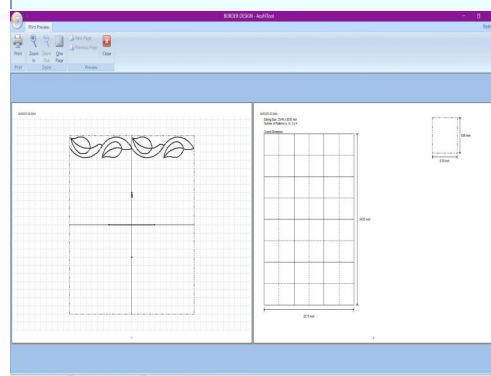


Figure R

Accessory of the Month August 2018

AcuFil Quilting Kit

Quilt Preparation

1. Pin or baste the 3 layers of the quilt together making sure that the backing and wadding are approximately 5'' larger than the quilt top all the way around.
2. Identify the center of your quilt top. You will begin stitching from the center most portion of the quilt and then neighbouring sections outward. | Figure S
3. Mark the centrelines on the quilt top. At the same time mark the top section of the quilt to indicate orientation for the hooping progression. (This is important for the stitching process so that the nesting of each design sits correctly.) | Figure T

Stitching the designs

1. Position the basted quilt layers on the AcuFil Quilting Hoop.
2. Place the AcuFil template (with the arrow mark to the top of your quilt) on the quilt and adjust the position of the quilt, aligning the reference lines to coordinate the quilt placement with the markings you made on the quilt. | Figure U
3. Set the quilt layers in the hoop by pressing down the AcuFil™ template.
4. While still pressing down on the AcuFil™ Template, snap the magnetic clamps onto the hoop to secure the quilt layers into the hoop. There should be 2 magnets on each side of the hoop. (Note: When attaching the magnets add magnets that are opposite each other before adding the next direction.)
5. Be sure to remove all pins and basting stitches from the quilting area before beginning stippling.
6. Once the first design has stitched take the printout of the designs template and stick it in place so that the reference lines on the hoop and template match.
7. Move the quilt to the second position either to the right or left of the original design. As the printed template is then showing you can use it to line up with the previously stitched design and continue until the area you need to complete is then filled following on and lining up designs against the template each time. (Note: always work from the centre out and try where possible to work in sections methodically rather than randomly.) | Figure V

Note: There are many variables with the listed methods of quilting such as wadding thickness, fabric, threads etc so it is suggest where possible to create a sample before you sew to understand allowances for each design.



Figure S



Figure T



Figure U



Figure V