

DIY Drawstring Back Pack Project

WHAT YOU WILL NEED

- Janome Sewing Machine with decorative stitches
- Janome Needles #14 sharp for stitching through layers
- Standard Sewing Foot
- Finger Guard Foot - recommend if sewing with Children would be the Janome finger guard foot for this project
- Janome plastic bobbins
- Scissors or thread snips
- Temporary fabric marker (*for marking fabric*)
- Ironing board & iron or something to press fabric (fingers can also work!!)
- Eyelets



FABRICS & NOTIONS

- ½ metre main fabric
- 30cm plain fabric for base
- 170cm x cording (for shoulder straps)
- Thread to match fabric
- Contrasting Thread for decorative stitches
- Large Eyelets
- ½ metre iron-on interfacing (medium) (optional)



INSTRUCTIONS

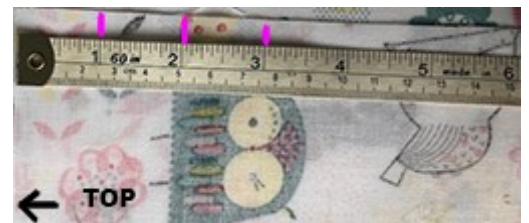
Step 1 — Mark lines on the wrong side of fabric

Place your main fabric wrong side up on the table. We are going to mark some sections on the fabric using our temporary fabric marker.

(Note: If your main fabric has a pattern make sure you know which is the top of the pattern— You don't want your design to be upside down!!!)

From the top edge of the fabric, measure and mark the following 3 measurements along the long edges.

Mark 2.5cm, 5cm and 7.5cm from the top edge.



Repeat on the opposite side

Step 2 - Press along top edges

Press your fabric down along the short edge at the 1st mark (2.5cm)



CUTTING INSTRUCTIONS

- 2 x 32cm x 32cm main fabric (*top*)
- 1 x 32cm x 25cm plain fabric (*base*)
- 2 x 85cm cording for straps
- 2 x 32cm x 32cm interfacing for top (*optional*)
- 1 x 32cm x 25cm interfacing for base (*optional*)

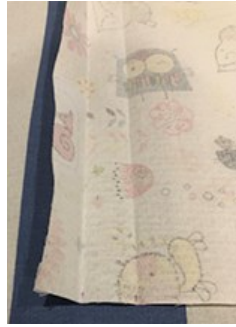
(OPTIONAL— if you want a stronger bag, attach interfacing to your pieces of fabric)

If using interfacing, place your interfacing glue side up on your ironing surface. Then place your main fabric right side up on top of the interfacing matching all the edges. Using your iron press from the centre out to adhere the interfacing to your fabric.

Step 3 - Press again

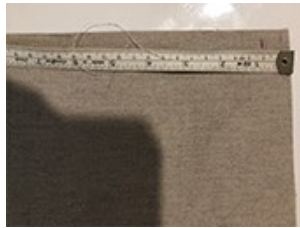
Fold the pressed edge over again down to the 5cm (2nd mark).

Open out again.



Step 4 - Mark Plain Fabric

At the short edge of the right side of the plain fabric mark a 2cm mark.



Step 5 - Sew Decorative

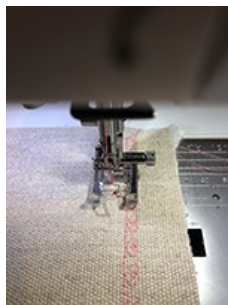
Stitches [\(Standard Sewing Foot\)](#)

Set your machine up with your contrasting thread.
Set your fabric on your machine and align the 2cm mark with the your needle.

Select any decorative stitch on your machine.

Sew a straight line of decorative stitches.

Sew a second line of decorative stitches. Line the side of the foot with the first row to make them parallel.



Repeat on the other long edge of the fabric.

Step 6 - Attach the main fabric to the plain base fabric

With right sides facing align the short edge of the main fabric to the edge of the plain base fabric with decorative stitching.

Sew the edge in place using a straight stitch on the machine and lining the edge of the foot with the fabric.

Repeat on the other edge.



Step 7 - Finish Edge—OPTIONAL [\(Standard Sewing Foot\)](#)

Change the stitch type from a straight stitch to a zigzag and sew along the edge of the seam to finish the edge.



Step 8 - Sew sides together

[\(Standard Sewing Foot\)](#)

Fold the fabric in half along the base of the fabric. Align the raw edges and the stitched edges.



Stitch at 1cm from the edge of the fabric down the long edge to the 5cm mark (2nd Mark).

Reverse Stitch. Cut thread.



Step 9 - Sew edges together

Move fabric to 7.5cm mark (3rd mark) and position needle 1cm from edge.

Stitch a couple of stitches and then reverse stitch back to start to secure the stitching.

Continue to stitch all the way to the bottom of the bag.

Note: Finish Edge—OPTIONAL

[\(Straight Stitch Foot\)](#)

Change the stitch type from a straight stitch to a zigzag and sew along the edge of the seam to finish the edge.



Step 10 - Stitch Other Seam (Standard Sewing Foot)

Repeat Step 8 and 9 on the other edge. Two side edges done!!

Step 11 - Press Side Seams

Press side seams open



Step 12 - Turn Top of Bag

On the wrong side of the fabric, turn fabric down at top of the bag along the pressed edge.



Step 13 - Turn Top of Bag Again

Fold the pressed edge over again down to the 5cm marking (2nd mark).



Step 14 - Topstitch

On the sewing machine align folded seam with the left of the foot and move needle to the left, so that you can topstitch the folded edge as close as you can.

Stitch edge in place.



Step 15 - Turn Right Side Out

Turn the bag to the right side.

ALMOST THERE!!!!



Step 16 - Insert Cording for straps—1st Cord

Take one piece of cord. At the end of the cord wrap a piece of sticky tape. (This stops the bobby pin damaging the cord)

Insert bobby pin into the end of the cord.



At the top of the bag, insert the bobby pin and cord and thread into the hole at the side seam. Thread it through until it comes out the other side.



Flip the bag and thread it through the other hole on the side of the bag. Continue threading through until it comes out the first hole.



Step 17 - Insert Cording for straps—2nd Cord

Take the other piece of cord. At the top of the bag, on the opposite side to where the first cord comes out, insert the bobby pin and cord and thread into the hole at the side seam. Thread it around past the hole on the opposite side and back around to the beginning.

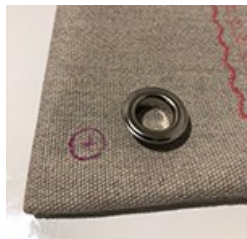


Step 18 - Mark and Attach Eyelets

At the base of the bag, mark 2cm from base and side



Position eyelet over the top and trace out the middle



Cut open hole



Once eyelet hole is cut, Insert the eyelet in to the hole from the right side of the fabric.

Place the washer on the opposite side.

Then follow the instructions on the eyelet package on how to attach the eyelet using the die and tool hammer.

Step 19 - Thread cords

Thread one end of the cord through the eyelet.



Align the other end of the cord with the cord that is threaded through the loop.

Tie the cords together in a knot.



Repeat with the other cord on the other side.



**Congratulations
your finished.
It's time to play.**