

STRIPE BEACH CAPE

Accessory of the Month February 2018

Binder Foot



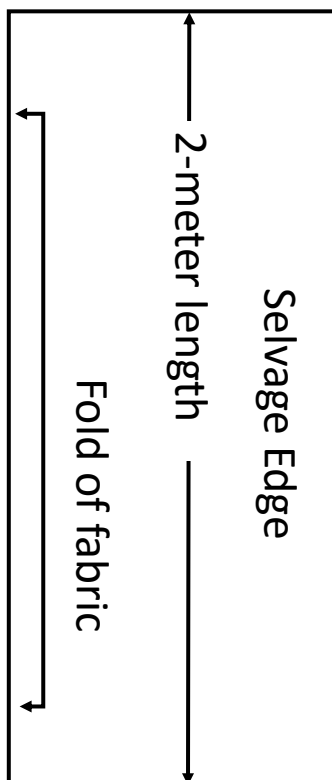
STRIPE BEACH CAPE

Accessory of the Month February 2018

Binder Foot

Construction:

1. Fold the fabric in half lengthwise so that the sel-
vage is matching and your fabric is a long rectan-
gle shape.



2. Measure halfway down the length on the folded edge and mark this point. (This should be approx. 1m) | Figure A
3. Pin template (A) on the fold of the halfway marking. This will create the neck and front section of the cape. | Figure B
4. Cut the centre front open along the fold and then cut around Template (A). Do not cut the centre back fold.
5. Take template (B) and round the corners. There will be six corners to round. (Two on the back and 4 on the front.) | Figure C
6. Trim away the selvage from the edges so they are not in the bound edge.
7. Attach the binder foot to the machine.

Requirements

- 2m piece of light weight fabric 145cm wide such as voile
- 5 meters of bias tape to match or contrast.
- Matching sewing thread for binding and fabric
- Printed Templates (A) and (B).
- Empty bobbins and bobbin fill bobbins
- Quilting clips / Pins
- Fabric Marker
- Ruler
- Scissors
- Binder Foot
- Standard Sewing Foot
- Tape measure
- Iron and Ironing Board
- Tweezers

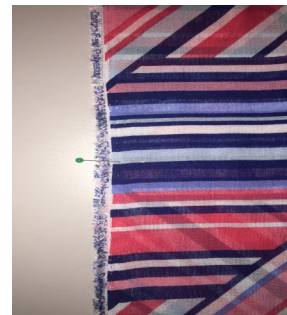


Figure A

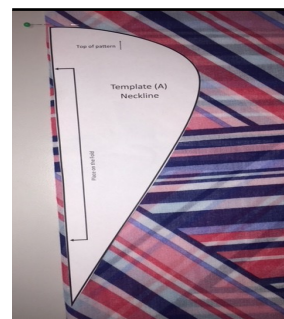


Figure B



Figure C

STRIPE BEACH CAPE

Accessory of the Month February 2018

Binder Foot

7. Feed the bias binding down the attachment. You may choose to feed through one of the spirals if using bias binding that is narrower than the main groove. (Tip: Trim the tip of the bias to a point, this will help you guide the binding into the attachment. Have a pair of tweezers ready to further help the bias binding into position.) | Figure D
8. Feed the bias binding under the foot and out the back of the machine. | Figure E
9. Take the cape fabric and insert it into the slot on the attachment. (Tip: start on the back side of the cape so that the join isn't noticed when finished.) | Figure F
10. Select the straight stitch on your machine. You may choose to move your needle position over to sit further onto the bias binding. To do this adjust the stitch width setting on your machine.
11. Start sewing the bias binding to the cape making sure that the binding and cape fabric are freely moving into the foot and not stretching. (Tip: You may choose to hold the fabric and binding on a slight angle up off the bed of the machine to help with the feeding of both sections. Stop regularly to adjust the fabrics and foot.) | Figure G
12. Once back to the start leave a section of approximately 2" not sewn and remove from the bias binder foot. Cut the binding $\frac{1}{2}$ " longer than the starting point of stitches and press $\frac{1}{4}$ " under using the iron.
13. Attach the standard sewing foot to your machine.
14. Fold the pressed section over the start point and pin or clip in place to secure before straight sewing the section closed. Backstitch at the end to ensure the stitching doesn't come undone.
15. Lay the cape down with wrong sides together and the front facing up.
16. Measure in 40cm from the side seam and down 40 cm from the shoulder fold and mark this point. Continue to mark in at 40cm down to the hem of the cape. (This line will become the shaping of the sleeve and body section.) | Figure H
17. Sew from the first pin to the hem line using a straight stitch and securing at each end. Repeat for the second side.
18. Your beach cape is now completed.



Figure D



Figure E

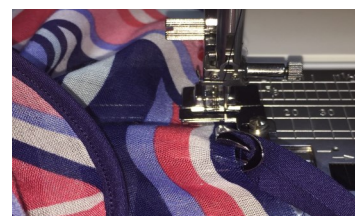


Figure F



Figure G

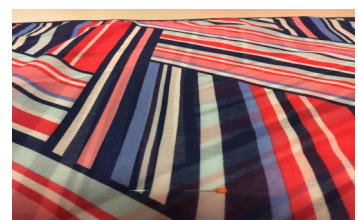


Figure H

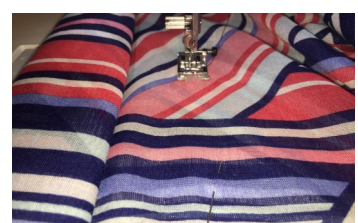
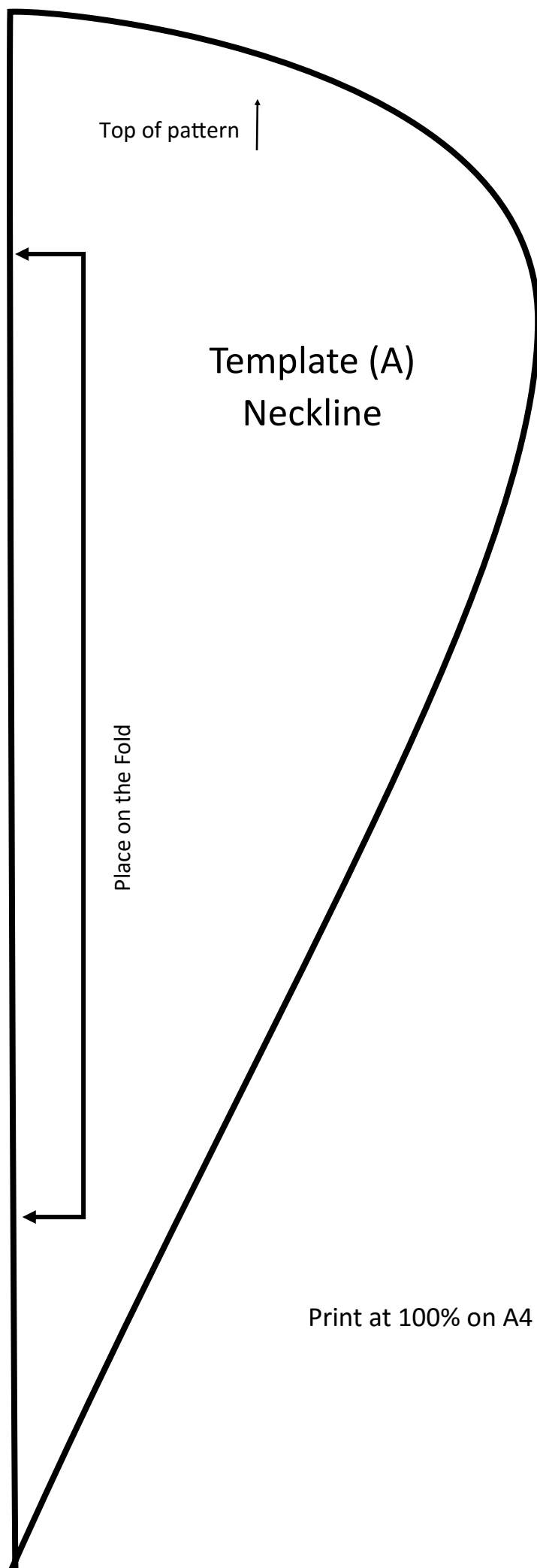


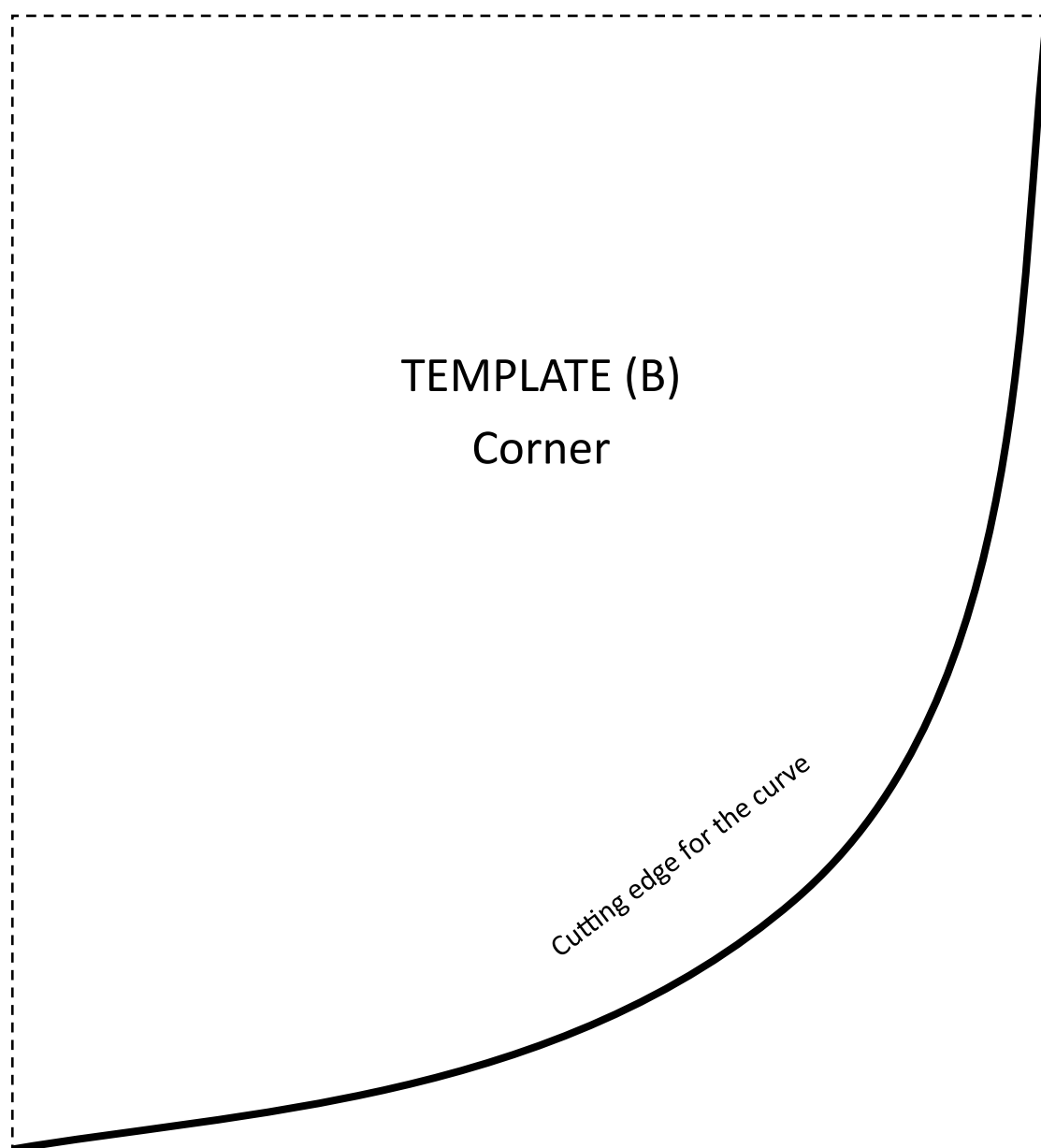
Figure I

STRIPE BEACH CAPE



Print at 100% on A4 paper

STRIPE BEACH CAPE



Print at 100% on A4 paper